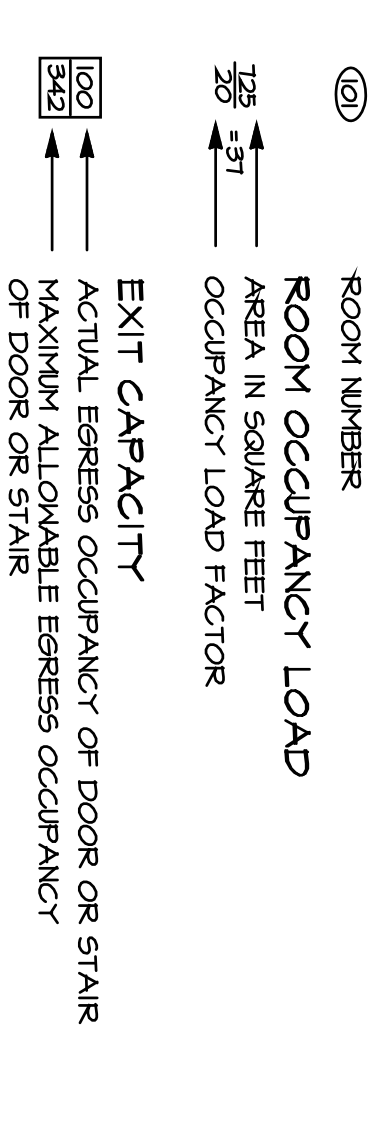


EGRESS PLAN LEGEND



NOTES:

1. A VALUE OF 0.2 INCHES OF WIDTH PER OCCUPANT HAS BEEN USED TO CALCULATE DOOR AND CORRIDOR EGRESS CAPACITY. THIS VALUE IS TO BE USED UNLESS THE DOOR AND ACTUAL CLEAR WIDTH OF CORRIDOR IS USED.
2. A VALUE OF 0.3 INCHES OF WIDTH PER OCCUPANT HAS BEEN USED TO CALCULATE STAIRWAY EGRESS CAPACITY. IN ALL CASES, THE ACTUAL CLEAR WIDTH BETWEEN HANDRAILS IS USED.

BUILDING ENVELOPE REQUIREMENTS - FENESTRATION

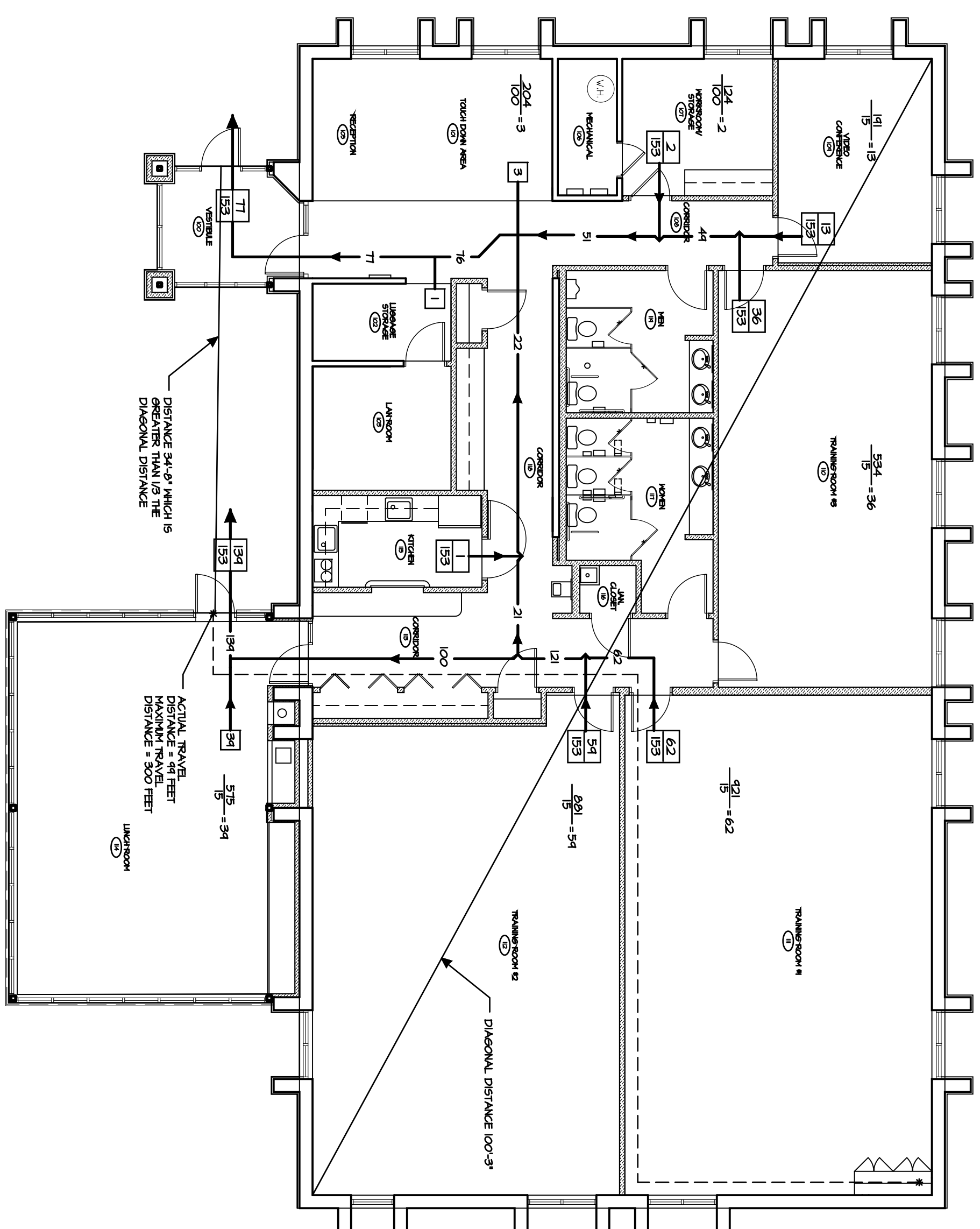
IEC 3006 TABLE 602.2(1) - ZONE 5 AND VARIATE 4
 PROTECTION FACTOR (PF) = 2'-0" / 4'-0" = .49
 MINIMUM AND GLAZED DOOR AREA OVER 10 % BUT NOT GREATER THAN 25% OF ABOVE-GRADE WALL

ELEMENT	MINIMUM REQUIRED CONDITION/VALUE
VERTICAL PENETRATION (40% MAX. ABOVE GRADE)	
U - FACTOR	0.35
FRAMING MATERIALS OTHER THAN METAL WITH OR WITHOUT METAL REINFORCEMENT OR GLAZING	
U - FACTOR	0.35
METAL FRAMING WITH OR WITHOUT THERMAL BREAK	
GLAZEWALL / STOREFRONT	U - FACTOR 0.45
ENTRANCE DOOR	U - FACTOR 0.30
ALL OTHER	U - FACTOR 0.35
SHGC - ALL FRAME TYPES	0.40
SHGC PF 0.25	NR
SHGC PF 0.25 PF < 0.5	NR
GLAZES (3% MAXIMUM)	0.60
U - FACTOR	0.40
SHGC	0.40
SHGC PF 0.25	NR
U - FACTOR	0.40
SHGC	0.40
U - FACTOR	0.40
SHGC	0.40

BUILDING ENVELOPE REQUIREMENTS - OPAQUE ASSEMBLIES

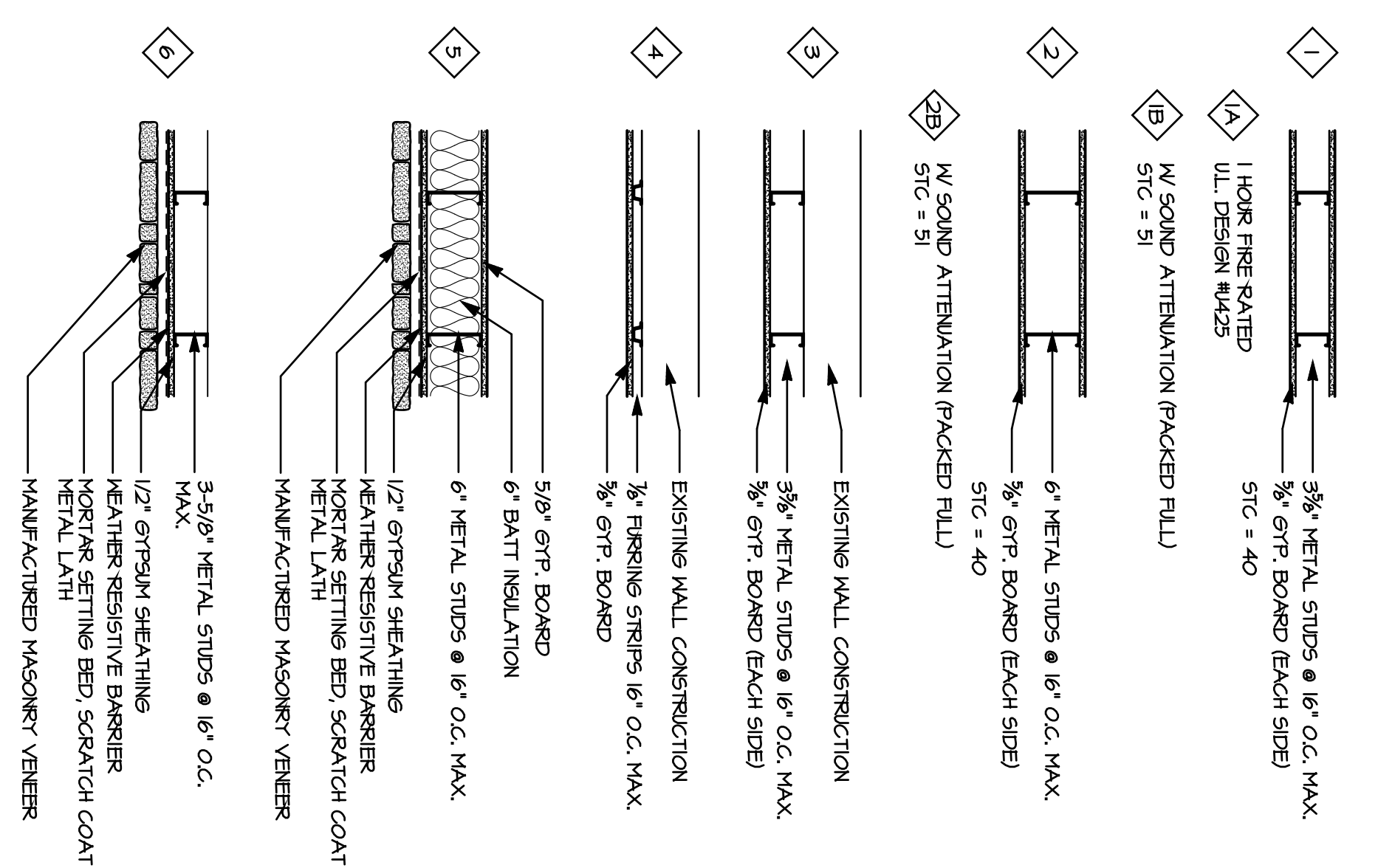
IEC 3006 TABLE 602.2(1) - ZONE 5 AND VARIATE 4
 PROTECTION FACTOR (PF) = 2'-0" / 4'-0" = .49
 MINIMUM AND GLAZED DOOR AREA OVER 10 % BUT NOT GREATER THAN 25% OF ABOVE-GRADE WALL

ELEMENT	MINIMUM REQUIRED CONDITION/VALUE
ROOFS	
INSULATION ENTIRELY ABOVE DECK	R-20 C.I.
METAL BUILDINGS (WITH R-5 THERMAL BREAK)	R-14
ATTIC AND OTHER	R-30
WALLS, ABOVE GRADE	
MAS	
METAL BUILDING	R-14 C.I.
WOOD FRAMED AND OTHER	R-13 + R-9.5 C.I.
WALLS, BELOW GRADE	R-13
BELOW GRADE WALL	NR
FLOORS	
MAS	
JOIST / FRAMING	R-10 C.I.
SLAB ON GRADE FLOORS	R-14
HEATED SLABS	NR
OPaque DOORS	R-15 FOR 24 IN. BELOW
SWAINING	U - 0.10
ROLL UP OR SLIDING	U - 0.15



EGRESS FLOOR PLAN

WALL TYPES



CODE INFORMATION

Date of Original Construction: 1893
 Group Classification: 2004
 Primary (Incidental): BUSINESS STORAGE
 Construction Type (Chapter 6): V-B
 Minimum Type Required: V-B
 Actual Type Provided: V-B
 Building Height (Chapter 5): 3 STOREYS / 60'
 Allowable Height (Story/Floor): 1 STORY / 15'
 Actual Height (Story/Floor): 1 STORY / 15'
 Building Area (each floor): 4,500 s.f.
 Total Floor: 5,250 s.f.

5. AREA MODIFICATIONS TO TABLE 503 (for each separate building as defined by the walls and/or exterior walls)

Total Perimeter = 50'-0" ft. NORTH	40'-0" ft. EAST	169'-9" ft. SOUTH	50'-0" ft. WEST
Open Perimeter = 50'-0" ft. NORTH	40'-0" ft. EAST	169'-9" ft. SOUTH	50'-0" ft. WEST
Total Frontage (F) = 359'-9" ft.	Perimeter (P) = 359'-9" ft.		
Width of open space (W) = > 30			
$I_p = 100 \left[\frac{F - 0.25}{30} \right] A$			
% Frontage Increase (I _p) = 15 %			
% of Allowable Table Area A _t (Table 503) = 100 %			
% Increase for Frontage I _p (506.2) = +15 %			
% Increase for automatic sprinklers I _s (506.3) = -41% %			
Total Percentage Factor = 4.1% %			
Conversion Factor (Total Percentage Factor/100) = 4.1%			

MIXED OCCUPANCY SEPARATED USES (602.3.2) (Use Group B)

a) ALLOWABLE AREA per floor (A_o) = 4,715 sq.ft. (conversion factor) x (tabular area table 503) = 5,285 s.f.

b) TOTAL FLOOR AREA all stories = 5,285 s.f.

c) ALLOWABLE FLOOR AREA all stories (506.4) = 4,715 sq.ft. x 1 = 4,715 sq.ft. (maximum 3)

6. FIRE-RESISTANCE RATED REQUIREMENTS FOR BUILDING ELEMENTS (Table 601)

1) Structural frame, including columns, girders, trusses, Beaming, Walls, Exterior, Interior	0	Hr16
2) Nonbearing walls and partitions (Exterior)	0	Hr16
3) Nonbearing walls and partitions (Interior)	0	Hr16
4) Floor construction (including supporting beams and joists)	0	Hr16
5) Roof construction (including supporting beams and joists)	0	Hr16

4. OCCUPANCY LOAD

Design Total for Building: 216
 Total Exit Capacity for Building: 306

10. MODIFICATIONS: Identification Number and Code Section Number being modified. Note if approved or not.

12. MINIMUM PLUMBING FIXTURE COUNT (per Chapter 4) 5,285 SF / 100 gross = 53 P

13. SPRINKLER PROTECTION: X Entire Building

BUSINESS - B

Number Required	Actual Required	Actual Provided	
Water Closets (W)	1/25	1/50	3
Water Closets (F)	1/25	1/50	4
Urinals (U)	1/50	1/50	1
Service Sinks	1/50	1/50	1

PROGRESS
 NOT FOR CONSTRUCTION
 October 16, 2009

PROJECT NUMBER 28141
 ADDITIONS AND RENOVATIONS
CIGNA UNIVERSITY
 1350 HALL BOULEVARD
 BLOOMFIELD, CONNECTICUT

EGRESS PLAN & CODE INFORMATION

DATE: 10-16-09
 DRAWN BY: XXX
 SCALE: XXX
 REVIEWED BY: XXX
 PROJECT NO.: 28141

REVISIONS
 NO. DATE DESCRIPTION

FRIAR ASSOCIATES INC.
 281 Farmington Avenue
 Farmington, CT 06032

SHEET NO. R1.2

Printed on Recycled Paper