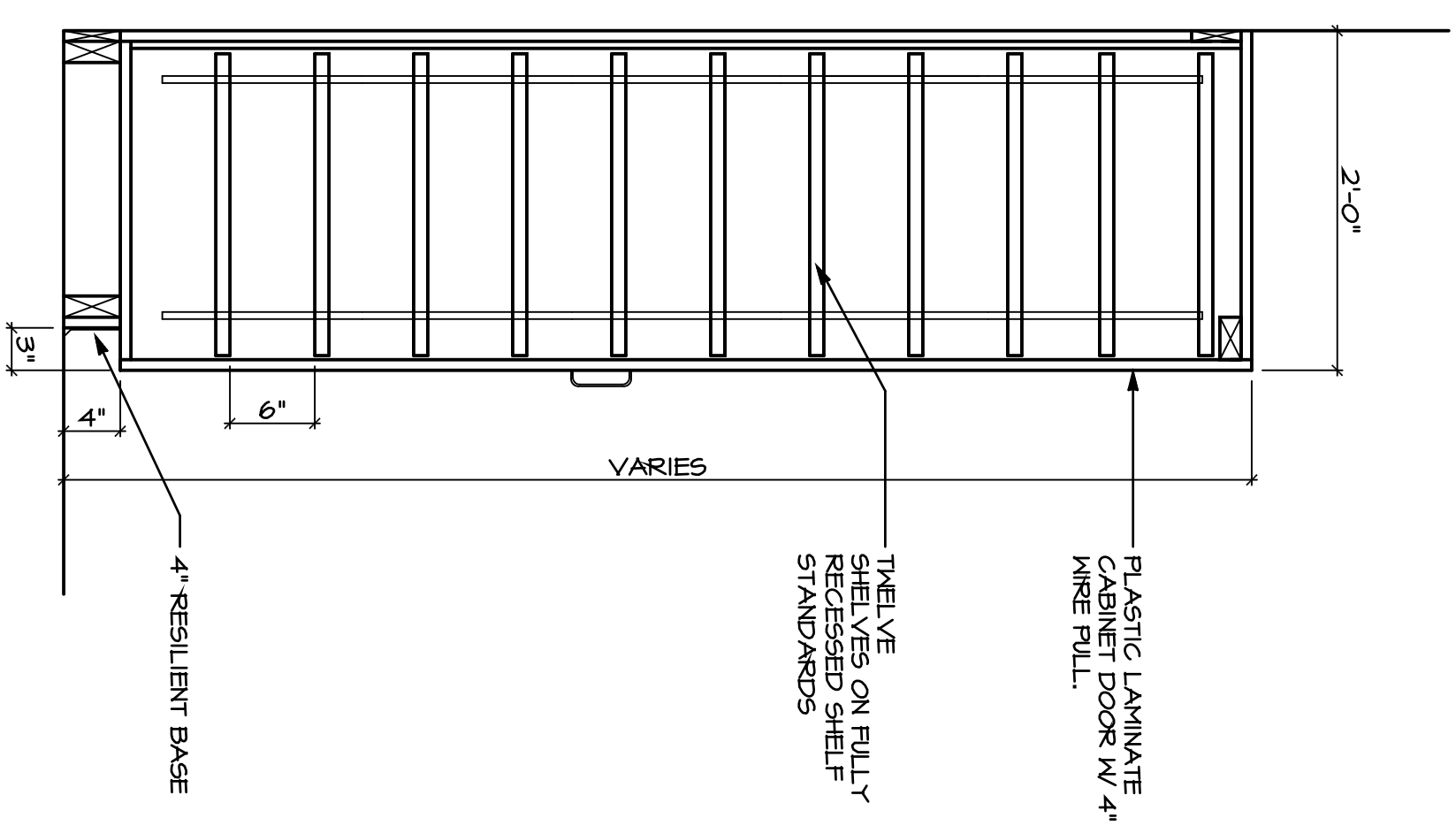


14 OPEN SHELF FOR MICROWAVE
SCALE: 1"=1'-0"



13 TALL CABINET W/ 13 SHELVES
SCALE: 1"=1'-0"

PROGRESS
NOT FOR CONSTRUCTION
October 16, 2009

Printed on Recycled Paper

PROJECT NUMBER 28141
ADDITIONS AND RENOVATIONS
CIGNA UNIVERSITY
1350 HALL BOULEVARD
BLOOMFIELD, CONNECTICUT

CASEWORK SECTIONS

1-XX

REVISIONS		
NO.	DATE	DESCRIPTION

DATE: 10-16-09
DRAWN BY: CMA
SCALE: 1/4"=1'-0"
REVIEWED BY: RR
PROJECT NO. 28141
ALL CASE SECTIONS



FRIAR ASSOCIATES INC.

281 Farmington Avenue
Farmington, CT 06032

SHEET NO.

A11.2