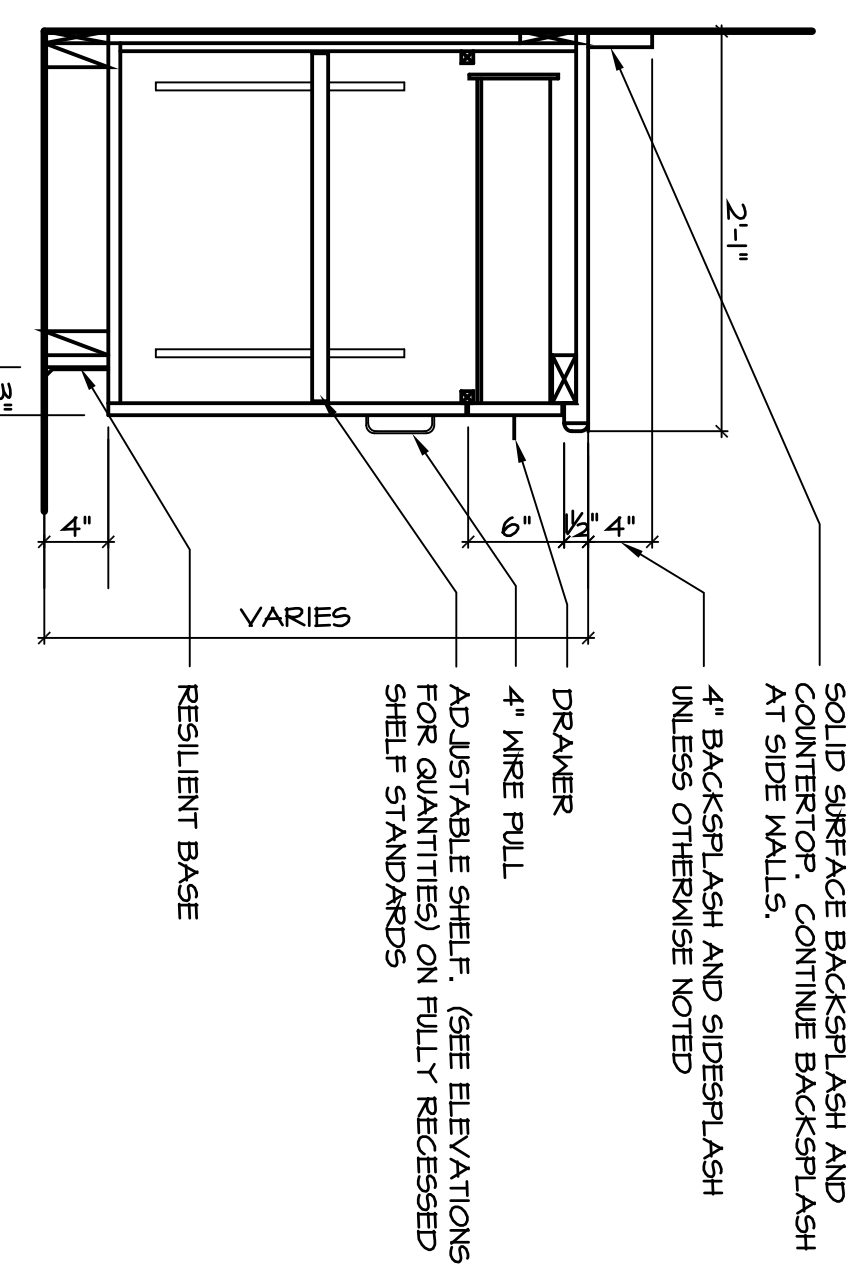


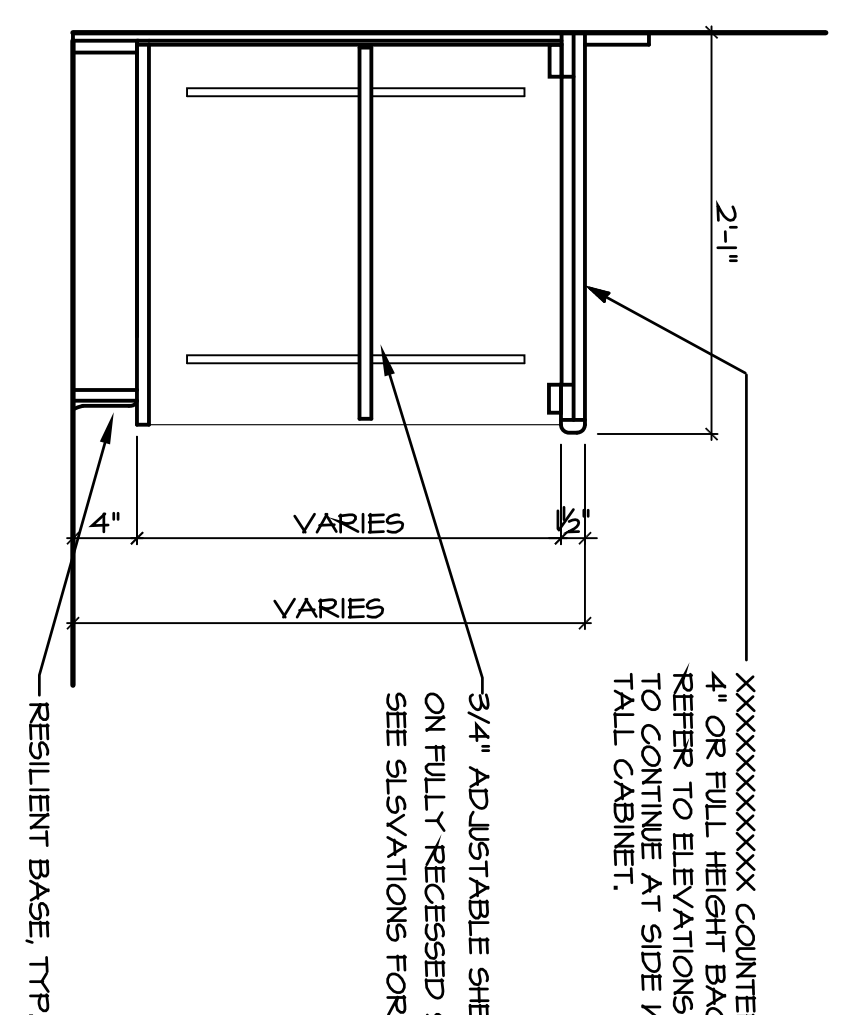
CORIAN OR LAMINATE COUNTERTOP WITH 4" OR FULL HEIGHT BACKSPLASH. REFER TO ELEVATIONS. BACKSPLASH TO CONTINUE AT SIDE WALLS.

**1 BASE CABINET**  
SCALE: 1"=1'-0"



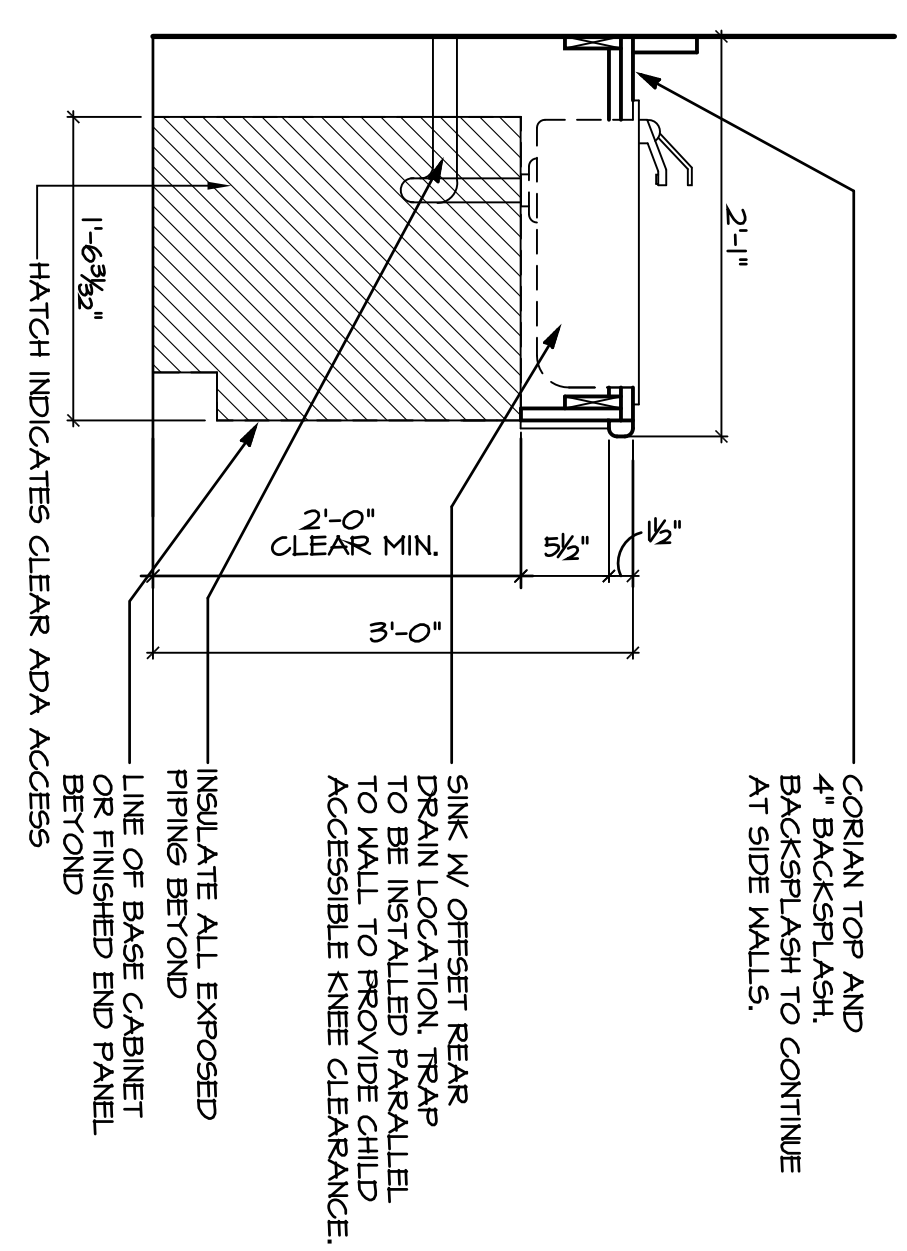
SOLID SURFACE BACKSPLASH AND 4" OR FULL HEIGHT BACKSPLASH AT SIDE WALLS. 4" BACKSPLASH AND SIDESPLASH UNLESS OTHERWISE NOTED.

**2 BASE CABINET W/ DRAWER**  
SCALE: 1"=1'-0"



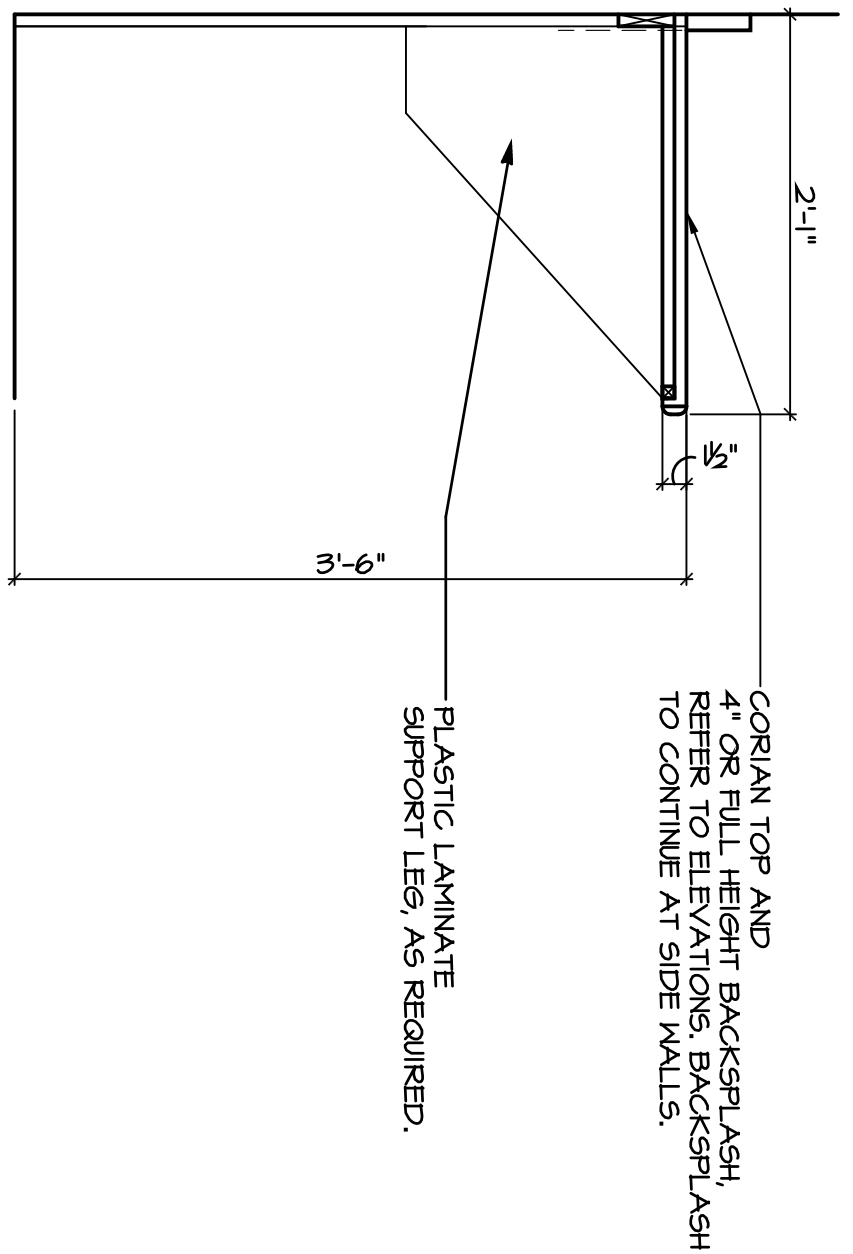
XXXXXXXXXXXXX COUNTERTOP WITH 4" OR FULL HEIGHT BACKSPLASH. REFER TO ELEVATIONS. BACKSPLASH TO CONTINUE AT SIDE WALLS OR TALL CABINET.

**3 BASE OPEN SHELF CABINET**  
SCALE: 1"=1'-0"



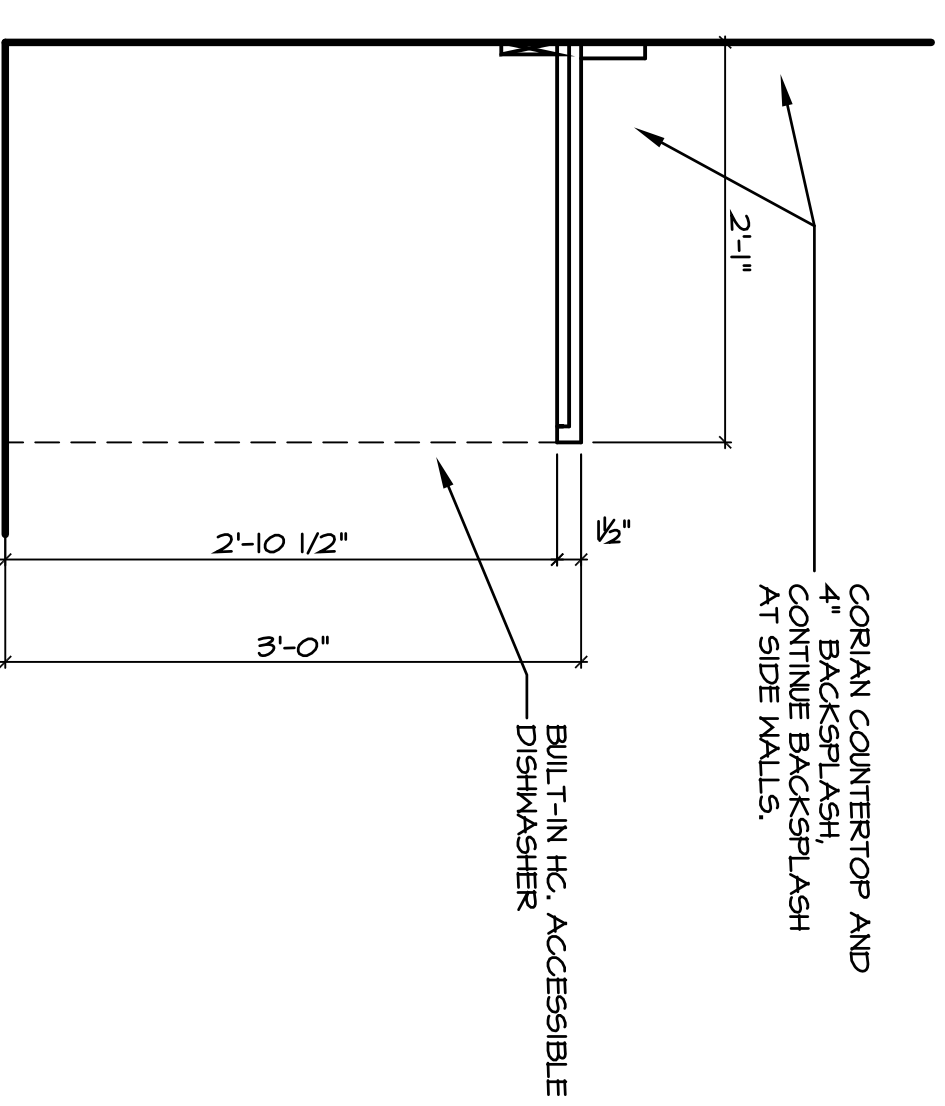
CORIAN TOP AND 4" BACKSPLASH TO CONTINUE AT SIDE WALLS.

**4 HC. ACCESS SINK- ADULT HEIGHT**  
SCALE: 1"=1'-0"  
SEE 4.2.4.3 KNEE CLEARANCE EXCEPTION 1  
FEDERAL REGISTER/VOL.63/NO.8/P.644



CORIAN TOP AND 4" OR FULL HEIGHT BACKSPLASH. REFER TO ELEVATIONS. BACKSPLASH TO CONTINUE AT SIDE WALLS.

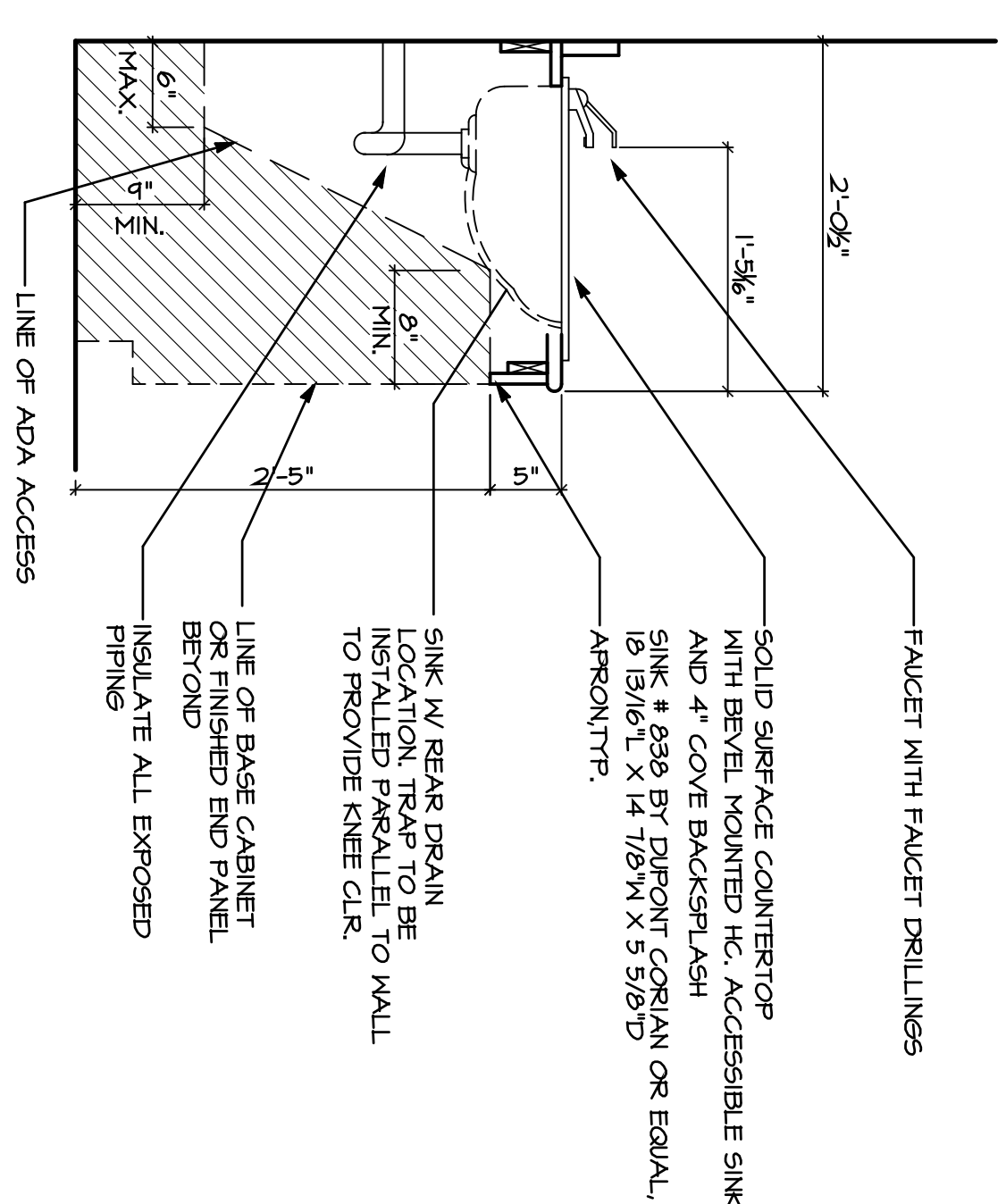
**5 BAR**  
SCALE: 1"=1'-0"



CORIAN COUNTERTOP AND 4" BACKSPLASH. CONTINUE BACKSPLASH AT SIDE WALLS.

\*APPLIANCE DIMENSIONS AND CASEWORK TO BE COORDINATED FOR PROPER FIT IN THE SUBMITTAL PHASE.

**6 UC/HC. DISHWASHER**  
SCALE: 1"=1'-0"



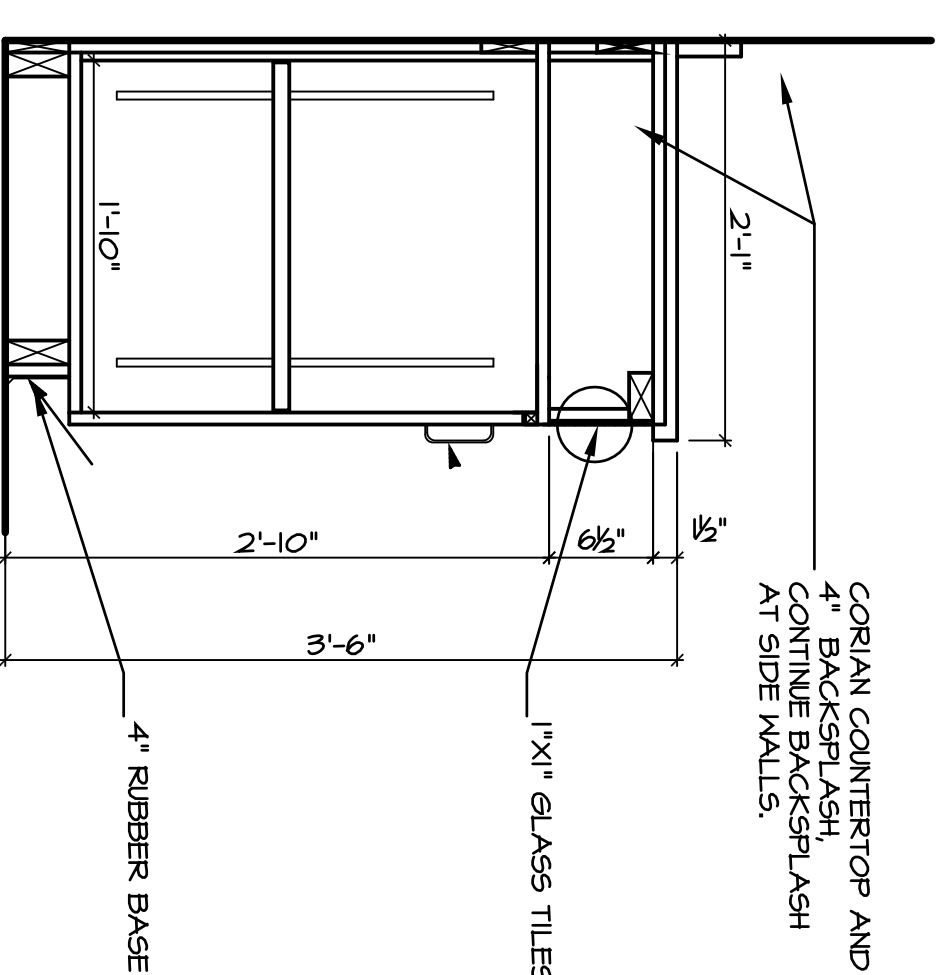
FAUCET WITH FAUCET DRILLINGS

SOLID SURFACE COUNTERTOP WITH BEVEL JOINTED H.C. ACCESSIBLE SINK AND 4" COVE BACKSPLASH. SINK # 832 BY DORON CORIAN OR EQUAL. 1 1/8" DIA. X 5 5/8" D. APPROX. TPP.

SINK W/ SEAR DRAIN AND STRAINER SHOULD BE INSTALLED PARALLEL TO WALL TO PROVIDE KNEE CLR. INSULATE ALL EXPOSED PIPING.

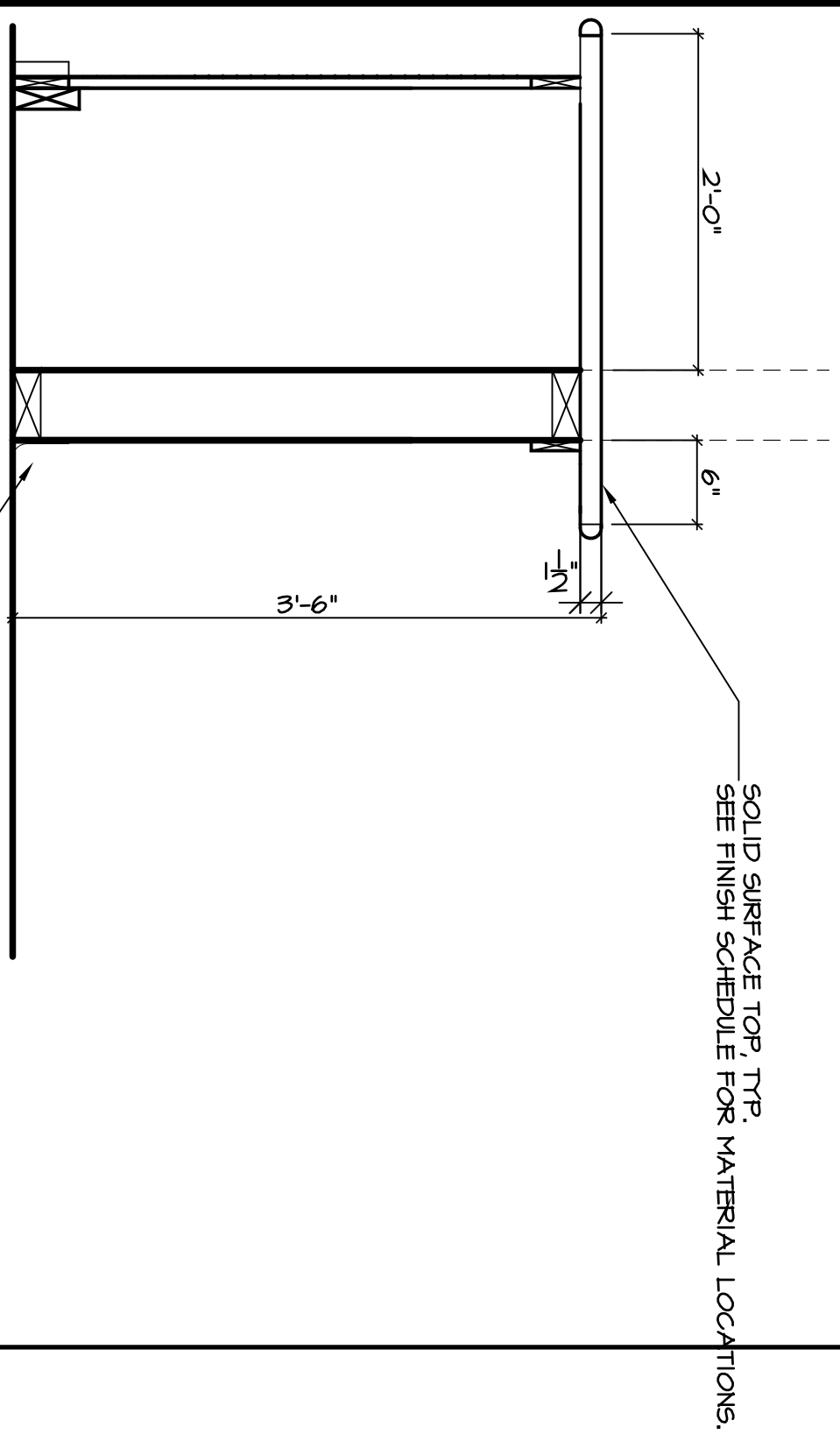
LINE OF ADA ACCESS

**7 HC. ACCESS - VANITY SINK**  
SCALE: 1"=1'-0"



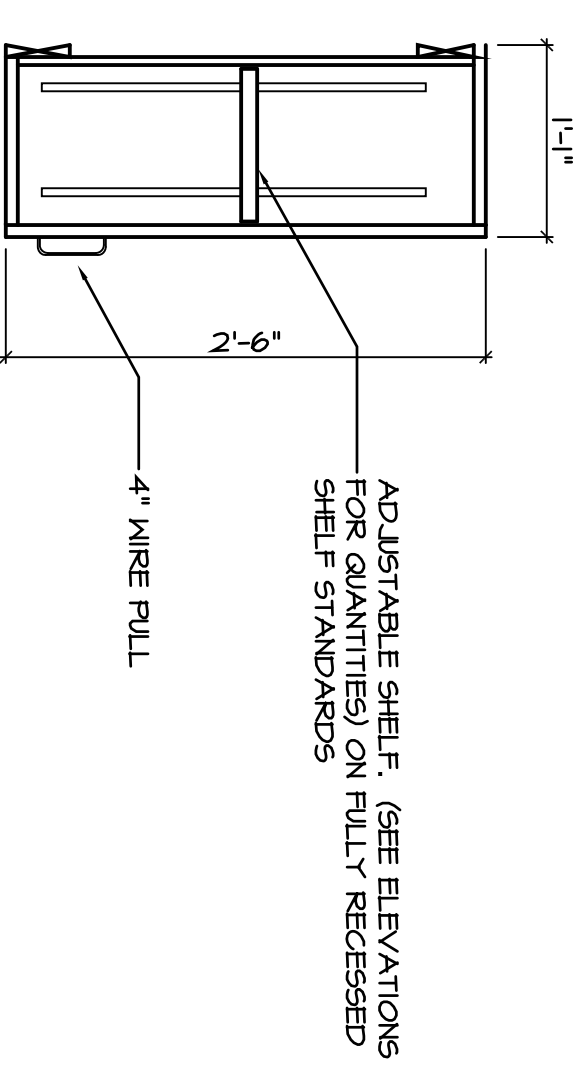
CORIAN COUNTERTOP AND 4" BACKSPLASH. CONTINUE BACKSPLASH AT SIDE WALLS.

**8 SERVERY**  
SCALE: 1"=1'-0"



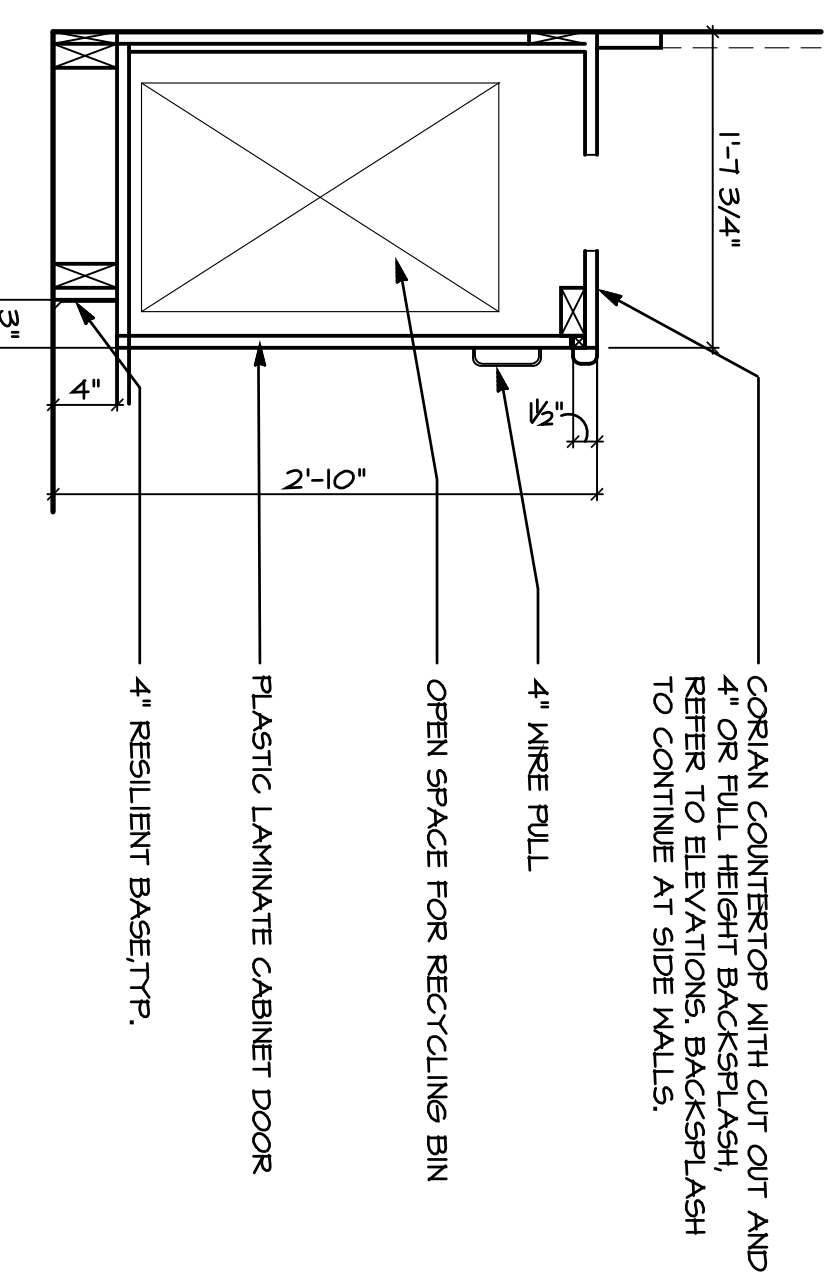
SOLID SURFACE TOP TPP. SEE FINISH SCHEDULE FOR MATERIAL LOCATIONS.

**9 KITCHEN SERVERY**  
SCALE: 1"=1'-0"



ADJUSTABLE SHELF. (SEE ELEVATIONS FOR QUANTITIES) ON FULLY RECESSED SHELF STANDARDS.

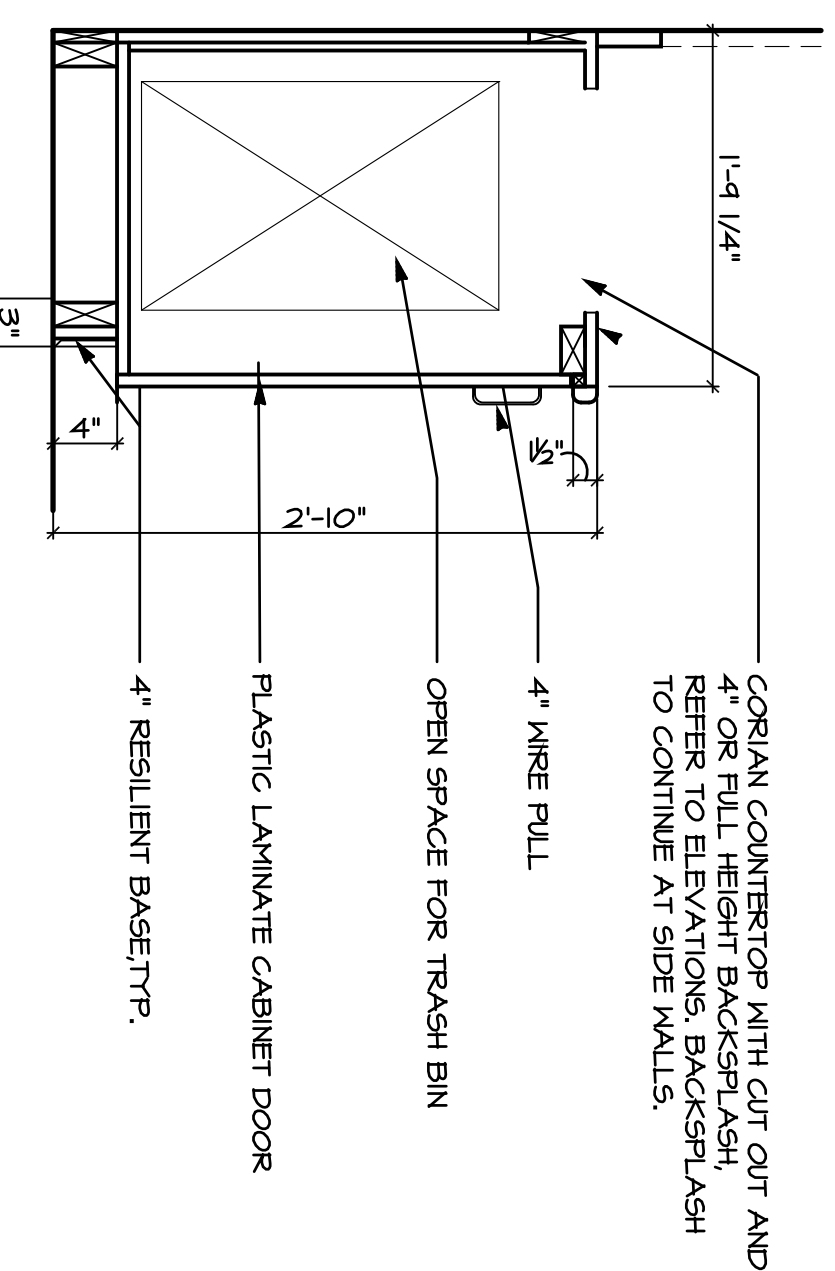
**10 UPPER CABINET**  
SCALE: 1"=1'-0"



CORIAN COUNTERTOP WITH CUT OUT AND 4" OR FULL HEIGHT BACKSPLASH. REFER TO ELEVATIONS. BACKSPLASH TO CONTINUE AT SIDE WALLS.

OPEN SPACE FOR RECYCLING BIN. 4" WIRE PULL. PLASTIC LAMINATE CABINET DOOR. 4" RESILIENT BASE/TPP.

**11 RECYCLE**  
SCALE: 1"=1'-0"



CORIAN COUNTERTOP WITH CUT OUT AND 4" OR FULL HEIGHT BACKSPLASH. REFER TO ELEVATIONS. BACKSPLASH TO CONTINUE AT SIDE WALLS.

OPEN SPACE FOR TRASH BIN. 4" WIRE PULL. PLASTIC LAMINATE CABINET DOOR. 4" RESILIENT BASE/TPP.

**12 TRASH**  
SCALE: 1"=1'-0"

REVISIONS		
NO.	DATE	DESCRIPTION

DATE: 10-16-09  
DRAWN BY: CMA  
SCALE: AS NOTED  
REVIEWED BY: RR  
PROJECT NO. 28141  
A11.1 CASEWORK SECTIONS

**CASEWORK SECTIONS**  
**1-XX**

PROJECT NUMBER 28141  
ADDITIONS AND RENOVATIONS  
**CIGNA UNIVERSITY**  
1350 HALL BOULEVARD  
BLOOMFIELD, CONNECTICUT



281 Farmington Avenue  
Farmington, CT 06032

**A11.1**

**PROGRESS**  
NOT FOR CONSTRUCTION  
October 16, 2009  
Printed on Recycled Paper